

50' SERIES



Hedge Road Landing
Jackson's Point



Elevation B

The Raines

1,773 square feet (Elevation 'B' 2,380 sq/ft with loft)

The Raines

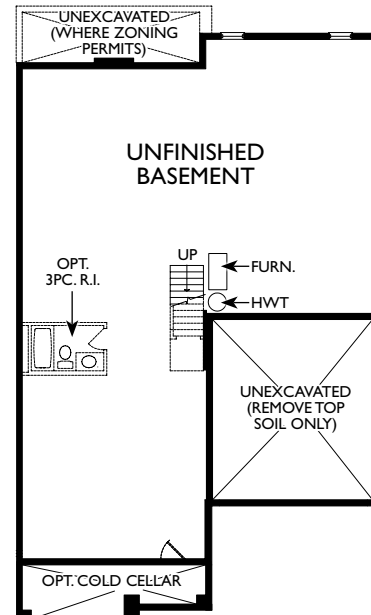
1,773 square feet



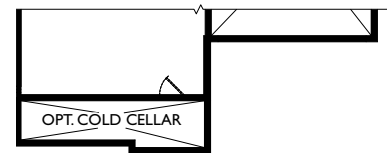
Elevation A (with opt. loft 2,369 sq/ft)



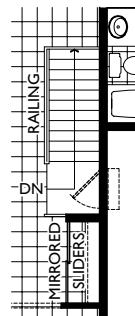
Elevation C 1,775 sq/ft
(with opt. loft 2,371 sq/ft)



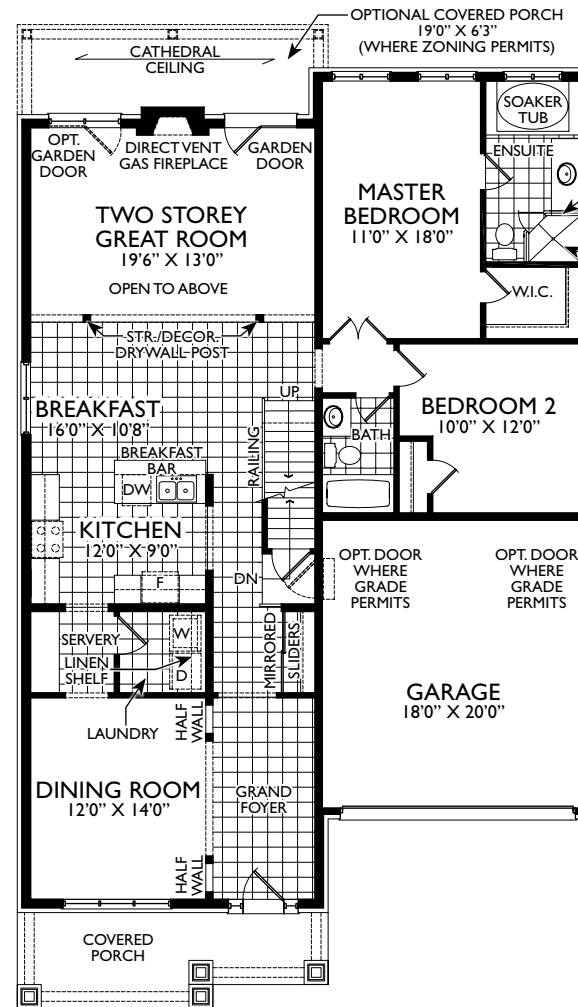
BASEMENT PLAN EL. 'A'



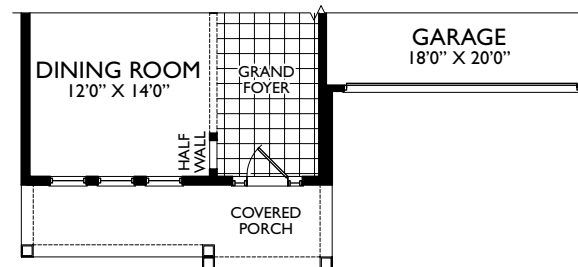
PARTIAL BASEMENT PLAN EL. 'B' & 'C'



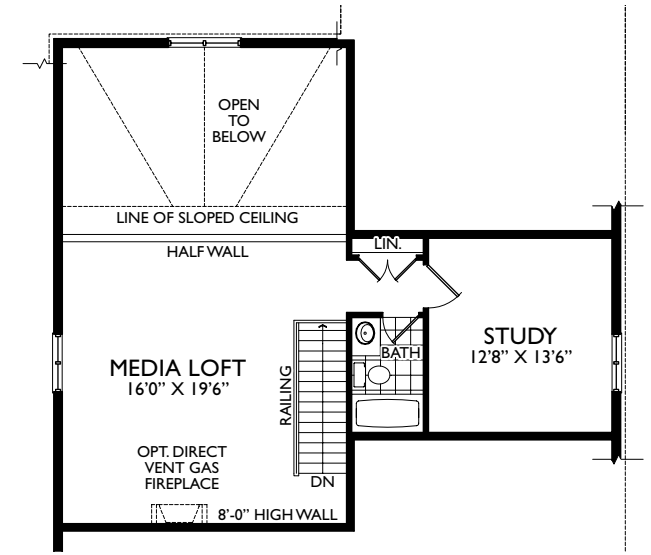
STAIRS FOR NON LOFT PLAN EL. 'A', 'B', & 'C'



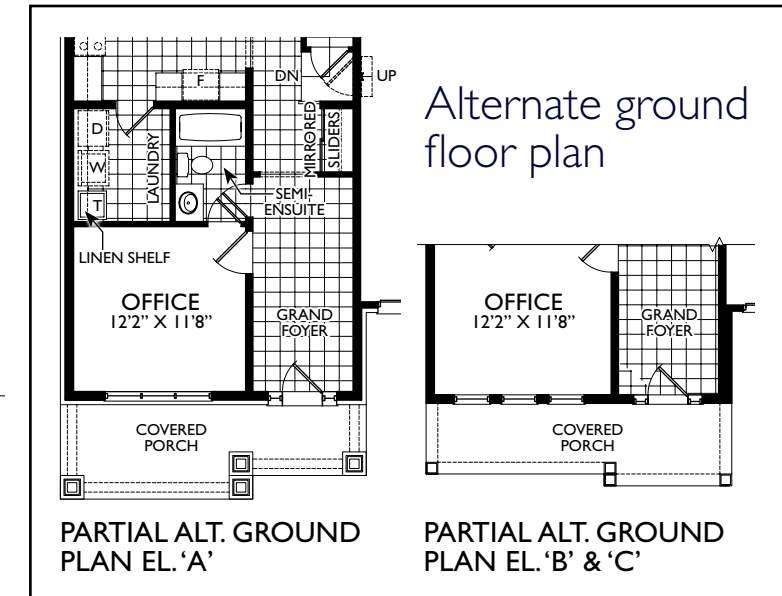
GROUND FLOOR PLAN EL. 'A'



PARTIAL GROUND FLOOR PLAN EL. 'A'



PARTIAL LOFT FLOOR PLAN EL. 'A', 'B', & 'C'



PARTIAL ALT. GROUND PLAN EL. 'A'

PARTIAL ALT. GROUND PLAN EL. 'B' & 'C'

