

50' SERIES



Hedge Road Landing  
Jackson's Point



Elevation C

# The Wheeler

1,795 square feet (2,454 sq/ft with loft)

# The Wheeler

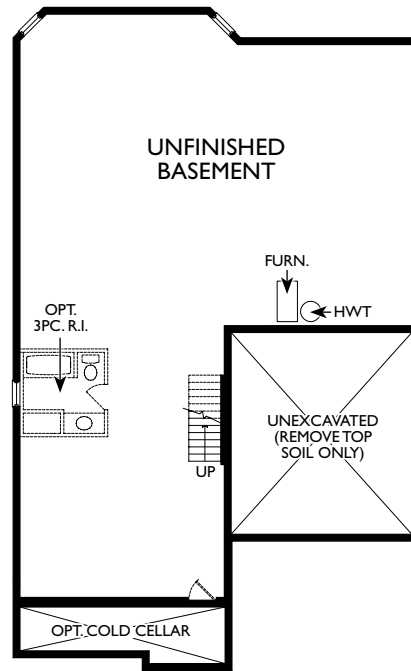
1,795 square feet



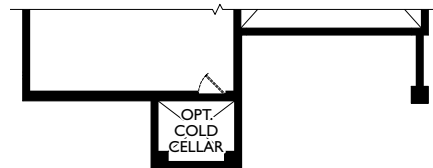
Elevation A (with opt. loft 2,454 sq/ft)



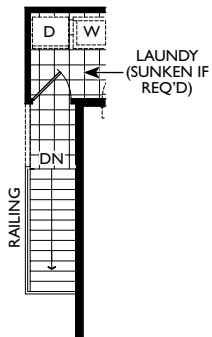
Elevation B (with opt. loft 2,454 sq/ft)



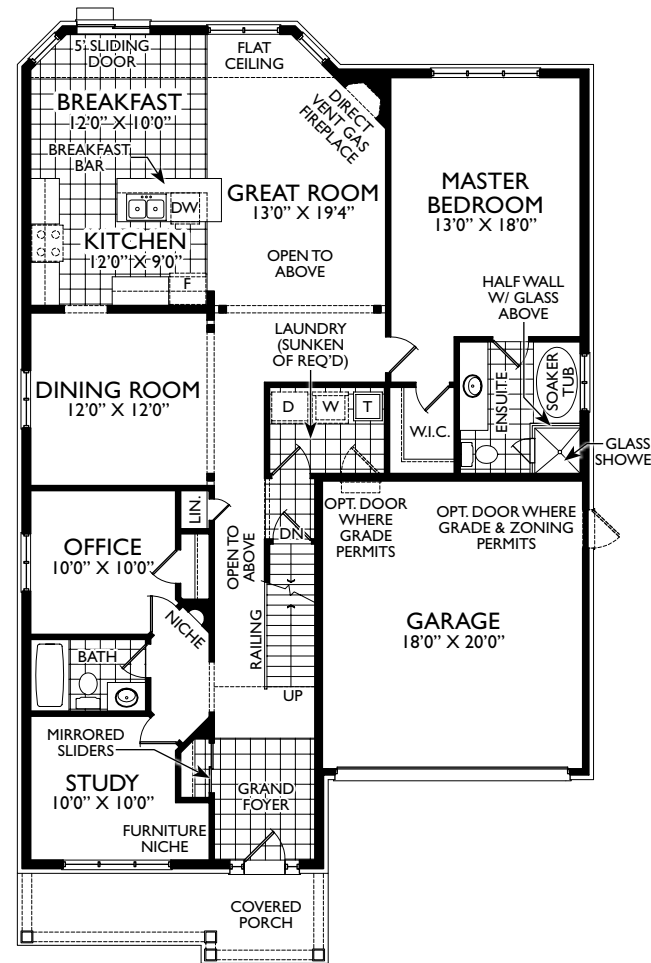
BASEMENT PLAN EL. 'A'



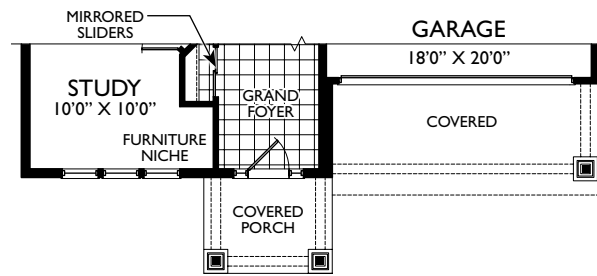
PARTIAL BASEMENT PLAN EL. 'B' & 'C'



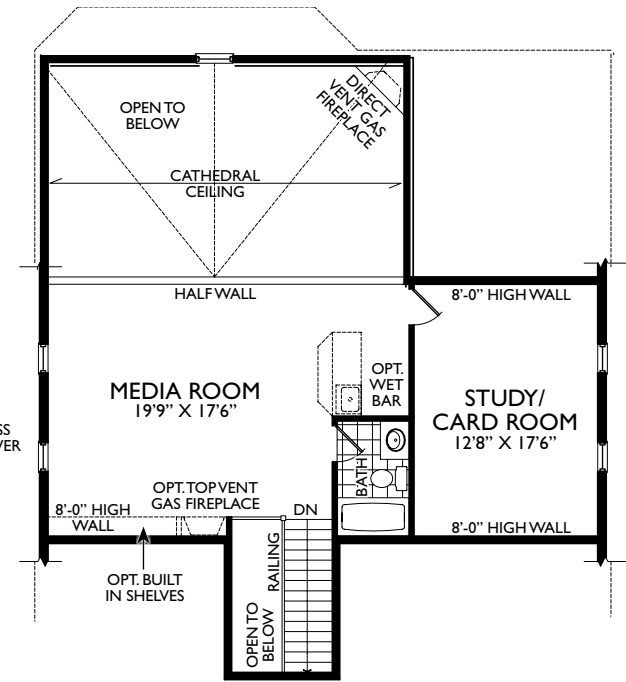
STAIRS FOR NON LOFT PLAN EL. 'A', 'B', & 'C'



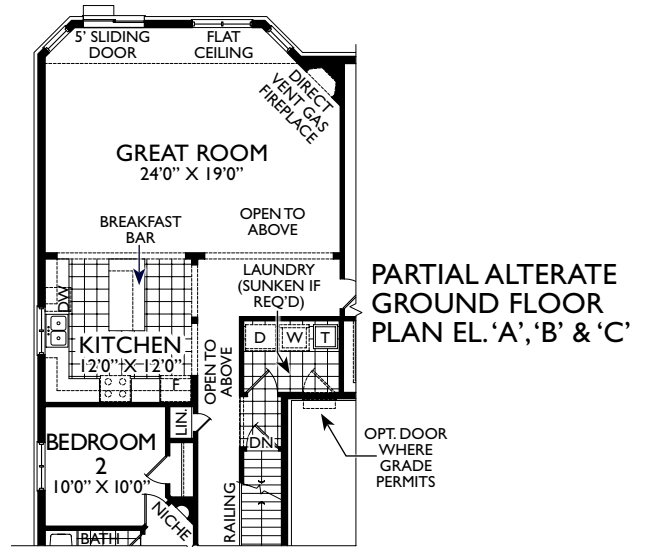
GROUND FLOOR PLAN EL. 'A'



PARTIAL GROUND FLOOR PLAN EL. 'B' & 'C'



LOFT FLOOR PLAN EL. 'A', 'B' & 'C'



PARTIAL ALTERATE GROUND FLOOR PLAN EL. 'A', 'B' & 'C'

