

40' SERIES



Hedge Road Landing  
Jackson's Point



Elevation A

The Duncan  
1,514 square feet with loft



# The Duncan

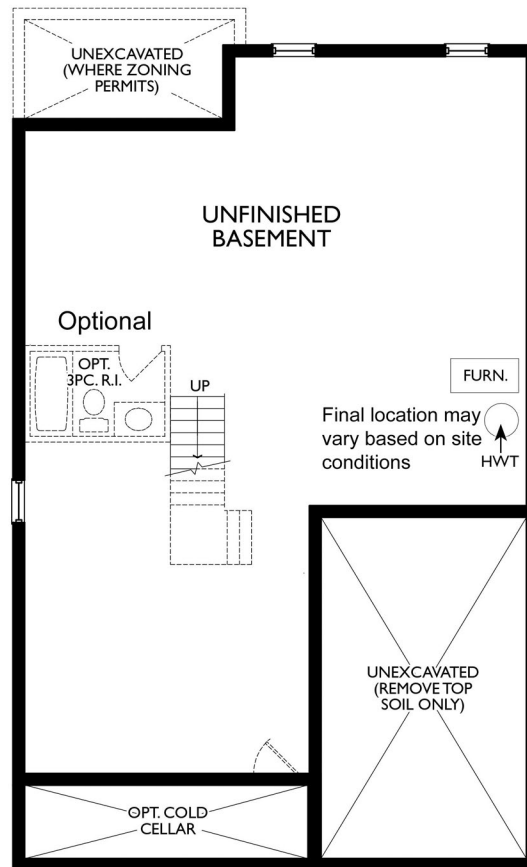
1,514 square feet with loft



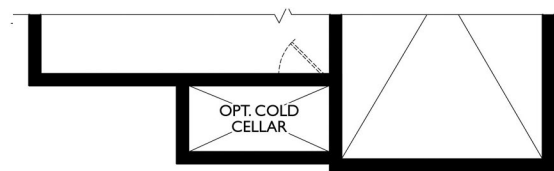
Elevation B (1,518 sq/ft)



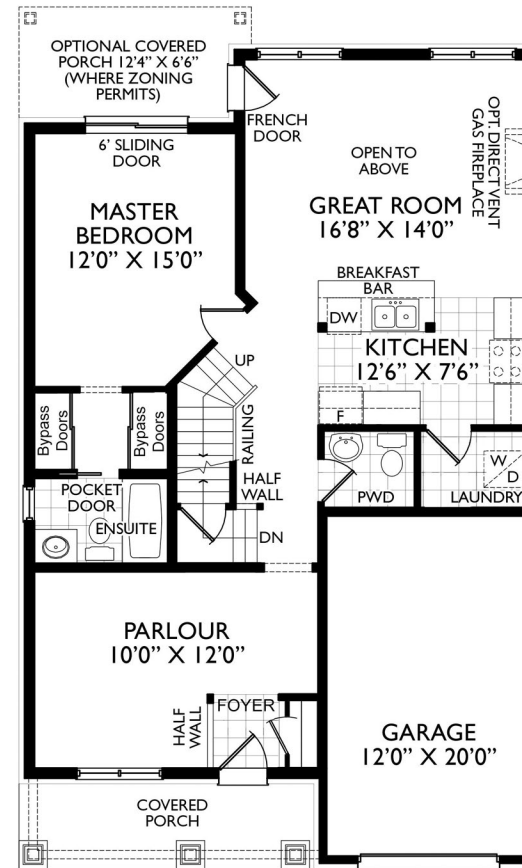
Elevation C (1,507 sq/ft)



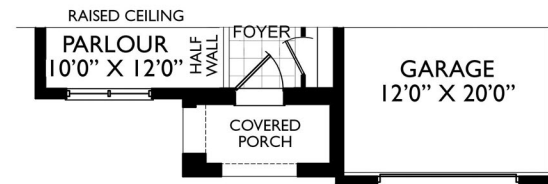
BASEMENT PLAN EL. 'A'



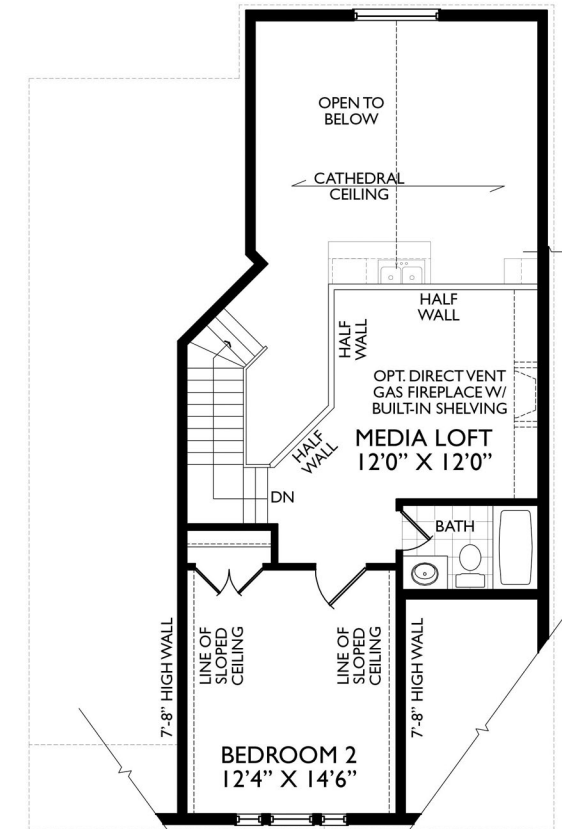
PARTIAL BASEMENT PLAN EL. 'B' & 'C'



GROUND PLAN EL. 'A'



PARTIAL GROUND FLOOR PLAN EL. 'B' & 'C'



LOFT FLOOR PLAN EL. 'A'



PARTIAL LOFT FLOOR PLAN EL. 'B' & 'C'

